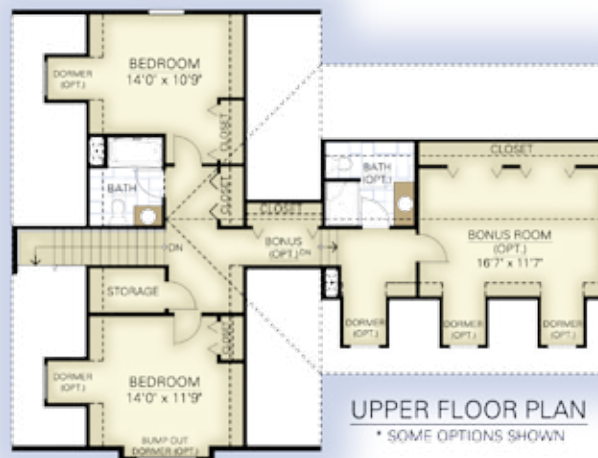




## Standard Features:

- 2,605 sq. ft. living space (including unfinished upper floor over great room and master bedroom)
- Modular mudroom addition
- 10/12 roof pitch
- 8' ceiling heights
- 3 bedrooms, 3 1/2 bath
- Open kitchen w/downdraft cooktop island plus raised bar counter
- Master bath w/whirlpool tub plus walk-in shower



## Optional Features:

- Panelized additions, sunrooms, porches & garage
- Dormers
- Bump out dormer
- Finished second floor over great room and master bedroom
- 9' ceilings in kitchen, dining, and great room with finished second floor
- Transom windows (9' ceilings only)
- Bonus area over dining and kitchen (unfinished)
- Roman two panel interior doors
- Oak stair & railings
- Country trim package
- Bump out bay window in master bedroom

